

The floor plan depicts a rectangular apartment layout. At the top left is a balcony (BALCON) with dimensions 3.14m and 1.66m. The main living area (SEJOUR/CUISINE) is at the top right, featuring a sofa, dining table, and kitchen area. Below it is the entrance (ENTREE) leading to two bedrooms (CHAMBRE 1 and CHAMBRE 2) and a bathroom (SDB). CHAMBRE 1 is at the bottom left, and CHAMBRE 2 is in the middle. The bathroom (SDB) is at the bottom right, adjacent to a toilet (WC). The plan includes various furniture items like beds, a sofa, a dining table, and kitchen fixtures. It also includes technical details such as lighting fixtures, doors, windows, and a scale bar from 0m to 5m. A north arrow is located in the bottom left corner.

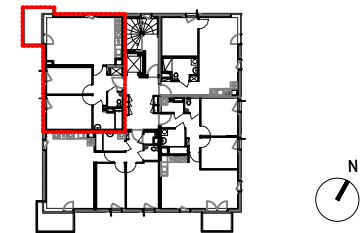
ZAC DE LA JAGUERE- Rue de l'aérodrome - 44400 REZE
CONSTRUCTION DE 60 LOGEMENTS COLLECTIFS
ET 12 MAISONS DE VILLE



MAITRE D'OUVRAGE
CIF COOPERATIVE
10, rue de Bel Air - CS 53205
44032 NANTES CEDEX 1
tel : 02 40 99 40 90
fax : 02 40 99 40 30
www.groupecif.com

MAITRE D'OEUVRE
EXPLORATIONS ARCHITECTURE

02/09/2013 INDICE 0



Bâtiment A	R+1	T3	A05
Entrée			6,90 m²
Séjour / Cuisine			27,30 m²
Salle de bain			4,90 m²
WC			1,80 m²
Chambre 1			12,20 m²
Chambre 2			9,60 m²
TOTAL HABITABLE			62,70 m²
Balcon			5,60 m²
TOTAL PRIVATIF			68,30 m²